

H296 Series

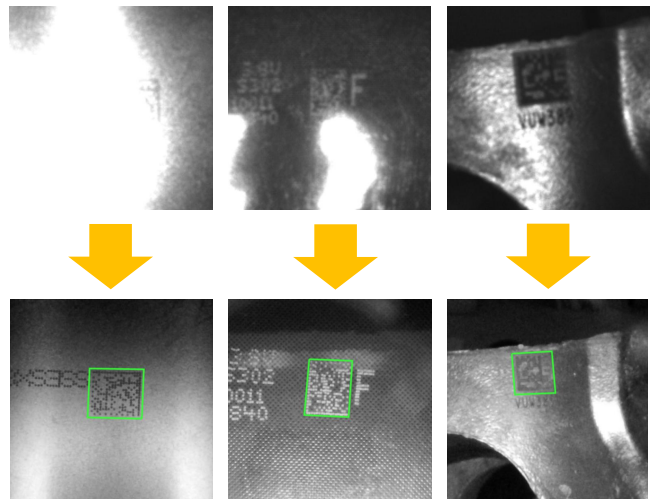
Handheld DPM Code Reader

H296 series is a new generation handheld DPM code reader combines with HEROJE's patented **HMAX™** decode algorithm and advanced multi-group illumination design, provide premium experience of reading 1D, 2D label-based and challenging DPM (direct part mark) codes.

Manufacturing environments in automotive, medical device, electronics, aerospace, and other industries require light weight, high performing and easy to use on reading shiny, high-reflective, glass, cylindrical and dark DPM codes.

Integrated diffuse and direct lighting enables superior image formation

Integrated multi-composite lighting (diffuse and direct lighting) delivers superior image formation to read dot peen, laser-etched, and label-based codes on challenging surfaces, such as shiny, high-reflective, glass, cylindrical and dark,



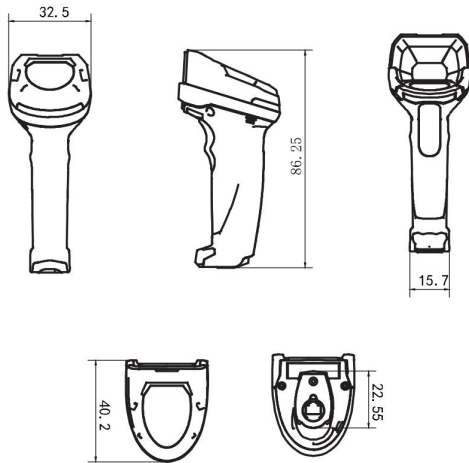
Patented HMAX™ algorithms deliver premium decode performance

HMAX™ algorithm is the innovative technological achievement of HEROJE, which adopts the dual-drive synchronous running of image acquisition and code decoding. For challenging applications which have requirements for decoding speed, the time-consuming decoding can be greatly reduced, and the premium decoding experience.

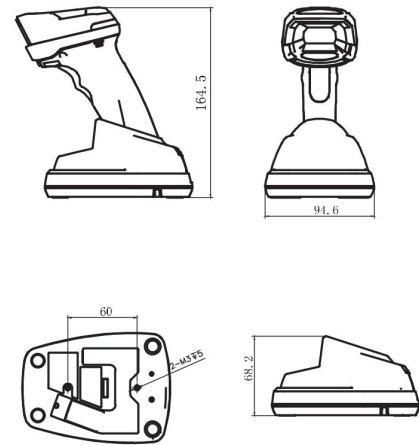
SCAN DEPTH OF FIELD	
Type	Depth of Field
1D-code 3mil	25 - 70mm
1D-code 5mil	11 - 85mm
1D-code 10mil	0 - 125mm
2D-code 5mil	26 - 65mm
2D-code 10mil	0 - 103mm
2D-code 20mil	5 - 150mm

Dimension

H296C & H296 Series



H296CW & H296W Series



Configuration Diagram

H296C Series (General Performance)

H296C-S-SR

Corded type
0.36 MP



H296CW-S-SR

Cordless type
0.36 MP



H296 Series (High Performance)

H296-S-SR

Corded type
1.3 MP








H296W-S-SR

Cordless type
1.3 MP



Cable & Power

	Ethernet cable	Serial cable	USB cable	Power	
	Communication 24V/1.5A	Communication 9-PIN 5V/2A	Communication 5V/2A	Power supply 5V/2A DC	Power supply 24V/1.5A DC
	CAB-HJ-NET3M	CAB-HJ-RS2M	CAB-HJ-USB018M	WT24-0502000-C	WTA36-2401500-C
					

TECHNICAL PARAMETERS

Model		H296C-S-SR	H296CW-S-SR	H296-S-SR	H296W-S-SR	
Type		General Performance	General Performance	High Performance	High Performance	
Light Receiver	Number of pixels	752*480		1280 x 1080		
	Sensor	CMOS Image Sensor				
Light emitter	Light Source	Innovative Astigmatism LED (Direct lighting-Red)		Multi-group Controllable Illuminations (Direct lighting- Red,White and Blue; Diffuse Lighting)		
	Pointer light source	Laser 650um				
Focus adjustment		Fixed Focus				
Reading specifications	Supported symbols	1D codes	EAN13,EAN8,UPC-A,UPC-E, Code128,Code39,Code93,Code32,I25,D25,Code11,MIS,DataBar, etc			
		2D codes	QR, MicroQR, PDF417, MicroPDF417, DataMatrix, GS1 DataMatrix etc			
	Minimum resolution	1D codes	0.0762 mm			
		2D codes	0.127 mm			
	Reading depth of field		20 mm to 220 mm		0 mm to 150 mm	
	Reading field of view		88 x 40 mm (Typical example at 150mm)		150 x 80 mm (Typical example at 150mm)	
I/O specifications	Ethernet	Communication standard	IEEE802.3 1000BASE-TX (Gigabit)			
		Supported protocols	Raw, Modbus-TCP, TCP, UDP, Ethernet/IP			
	Serial communication	Communication standard	RS-232C			
		Supported speed	2400, 4800, 9600, 14400, 19200, 38400, 57600, 115200 bps			
		Supported protocols	Raw, Modbus-RTU			
	USB	Communication standard	Compliant with USB2.0High Speed, compatible with USB 1.1 Full Speed			
		Supported protocols	USB HID Keyboard, USB-COM			
	Wireless 2.4G	Communication standard	Wireless 2,4G			
		Supported protocols	802.11g			
		Interface to PC	USB/RS232/Ethernet			
Environmental resistance	Enclosure rating		IP64			
	Operating ambient temperature		-5°C to +65 °C			
	Ambient storage temperature		-20°C to +70°C			
	Operating ambient humidity		35%RH to 85% RH (No condensation)			
	Ambient storage humidity		35%RH to 85% RH (No condensation)			
	Ambient light		Sunlight: 10000 lux, Incandescent lamp: 6000 lux, Fluorescent lamp: 2000 lux			
	Operating environment		No dust or corrosive gas present			
Vibration resistance		10 to 55 Hz Double amplitude 0.75 mm, 3 hours each in X, Y and Z directions				
Ratings	Power voltage		5V DC for USB and RS232, 24V DC for Ethernet			
	Electric current consumption		Approx. 350 mA	Working: 350 mA Standby: 240 mA Sleeping: 120 mA	Approx. 350 mA	Working: 350 mA Standby: 240 mA Sleeping: 120 mA
	Battery capacity		/	3200 mA	/	3200 mA
Weight		120 g	396 g	130 g	406 g	

HEROJE Co., Ltd

www.heroje.com

3RD FLOOR, BUILDING B, SENHAINUO
WEIJIAN INDUSTRIAL PARK, JINTAI ROAD
NO.7, SHIYAN STREET, China

Asia Pacific
service@heroje.com

The Americas
service@heroje.com

Europe
service@heroje.com