



Industrial Printer

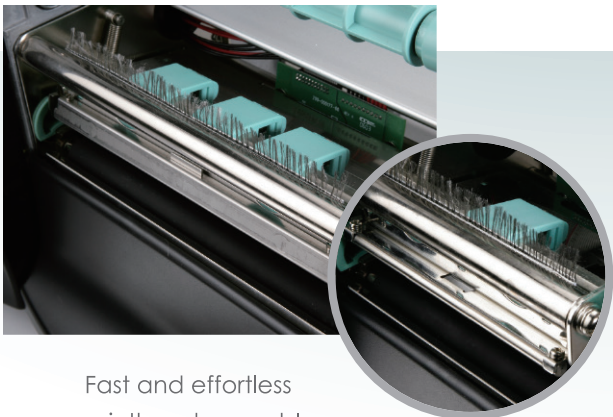
# EZ6250i / EZ6350i

Die-casting and metal design

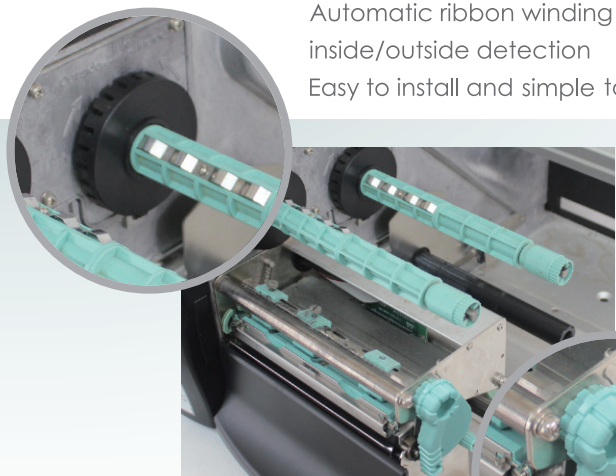
Heavy Duty 6" Industrial Barcode Printer

for your most demanding applications

Perfect for large size labels or special materials



Fast and effortless  
printhead assembly  
for efficient TPH switch



Automatic ribbon winding  
inside/outside detection  
Easy to install and simple to use

**GoDEX**

Quick TPH lock lever

# EZ6250i/EZ6350i Series Printer Specifications

Model Name		EZ6250i	EZ6350i
<b>Print Method</b>		Thermal Transfer / Direct Thermal	
<b>Resolution</b>		203 dpi (8 dot/mm)	300 dpi (12 dot/mm)
<b>Print Speed</b>		7 IPS (177 mm/s)	5 IPS (127 mm/s)
<b>Print Width</b>		6.61" (168 mm)	
<b>Print Length</b>		Min. 0.16" (4 mm)** ; Max. 70" (1778 mm) Min. 0.16" (4 mm)** ; Max. 30" (762 mm)	
<b>Processor</b>		32-bit RISC CPU	
<b>Memory</b>	<b>Flash SDRAM</b>	8 MB Flash (4 MB for user storage) 32 MB	
<b>Sensor Type</b>		Adjustable reflective sensor and transmissive sensor, left aligned	
<b>Media</b>	<b>Type</b>	Continuous form, gap labels, black mark sensing, and punched hole; label length set by auto sensing or programming	
	<b>Width</b>	Tear : 2" (50.8 mm) Min. - 7" (178 mm) Max. Cutter : 6.5" (165 mm) Max.)	
	<b>Thickness</b>	Peeler with Rewind : 7" (178 mm) Max.	
	<b>Label roll diameter</b>	0.003" (0.076 mm) Min.- 0.01" (0.25 mm) Max	
	<b>Core diameter</b>	Max. 8" (203.2 mm) with 3" (76.2 mm) core / Max. 6" (152.4 mm) with 1.5" (38.1 mm) core	
<b>Ribbon</b>	<b>Types</b>	Wax, wax/resin, resin	
	<b>Length</b>	Max. 1471' (450 m)	
	<b>Width</b>	Min 2.36" – Max. 6.85" (60 mm - 174 mm)	
	<b>Ribbon roll diameter</b>	2.99" (76 mm) Max	
	<b>Core diameter</b>	1" (25.4 mm)	
<b>Printer Language</b>		EZPL, GEPL, GZPL, GDPL auto switch	
<b>Software</b>	<b>Label design software</b>	GoLabel (for EZPL only)	
	<b>Driver</b>	Vista, Windows 7, Windows 8 & 8.1, Windows 10, Windows Server 2008 R2, 2012, 2012 R2, 2016, 2019, MAC, Linux	
	<b>SDK</b>	Win CE, .NET, Windows Vista, Windows 7, Windows 8 & 8.1, Windows 10, Android, Mac, iOS	
<b>Resident Fonts</b>	<b>Bitmap Fonts</b>	6, 8, 10, 12, 14, 18, 24, 30, 16X26 and OCR A & B Bitmap fonts 90°, 180°, 270° rotatable, single characters 90°, 180°, 270° rotatable Bitmap fonts 8 times expandable in horizontal and vertical directions	
	<b>TTF Fonts</b>	TTF Fonts (Bold / Italic / Underline ). 0°,90°, 180°, 270° rotatable	
<b>Download Fonts</b>	<b>Bitmap Fonts</b>	90°, 180°, 270° rotatable, single characters 90°, 180°, 270° rotatable 16x16, 24x24. Traditional Chinese (BIG-5), Simplified Chinese(GB2312), Japanese (S-JIS), Korean (KS-X1001)	
	<b>Asian Fonts</b>	90°, 180°, 270° rotatable and 8 times expandable in horizontal and vertical directions	
<b>Barcodes</b>	<b>1-D Bar Codes</b>	TTF Fonts (Bold / Italic / Underline ). 0°,90°, 180°, 270° rotatable	
	<b>2-D Bar Codes</b>	China Postal Code, Codabar, Code 11, Code 32, Code 39, Code 93, Code 128 (subset A, B, C), EAN-8/EAN-13 (with 2 & 5 digits extension), EAN 128, FIM, German Post Code, GS1 DataBar, HIBC, Industrial 2 of 5 , Interleaved 2-of-5 (I 2 of 5) , Interleaved 2-of-5 with Shipping Bearer Bars, ISBT-128, ITF 14, Japanese Postnet, Logmars, MSI, Postnet, Plessey, Planet 11 & 13 digit, RPS 128, Standard 2 of 5, Telepen, Matrix 2 of 5, UPC-A/UPC-E (with 2 or 5 digit extension), UCC/EAN-128 K-Mart and Random Weight	
<b>Code Pages</b>	Aztec code, Code 49, Codablock F , Datamatrix code, MaxiCode, Micro PDF417, Micro QR code, PDF417, QR code, TLC 39, GS1 Composite		
<b>Code Pages</b>	Codepage 437, 737, 850, 851, 852, 855, 857, 860, 861, 862, 863, 865, 866, 869, Windows 1250, 1251, 1252, 1253, 1254, 1255, 1257 Unicode UTF8 · UTF16BE · UTF16LE		
<b>Graphics</b>	Resident graphic file types are BMP and PCX, other graphic formats are downloadable from the software		
<b>Interfaces</b>	<ul style="list-style-type: none"> <li>• USB 2.0 (B-Type)</li> <li>• Serial port: RS-232 (DB-9)</li> <li>• IEEE 802.3 10/100 Base-Tx Ethernet port (RJ-45)</li> <li>• USB Host (A-Type)</li> </ul>		
<b>Control Panel</b>	<ul style="list-style-type: none"> <li>• Color TFT LCD with navigation button</li> <li>• Calibration button</li> <li>• Power on/off button</li> </ul>		
<b>RTC</b>	Standard		
<b>Power</b>	Auto Switching 100-240V AC, 50-60Hz		
<b>Environment</b>	<b>Operation temperature</b>	41°F to 104°F (5°C to 40°C)	
	<b>Storage temperature</b>	-4°F to 140°F (-20°C to 60°C)	
<b>Humidity</b>	<b>Operation</b>	20-85%, non-condensing	
	<b>Storage</b>	10-90%, non-condensing	
<b>Agency Approvals</b>		CE (EMC) · FCC Class B · CB · UL · cUL · CCC	
<b>Dimension</b>		Length : 20.31" (516 mm) Height : 11.22" (285 mm) Width : 13.58" (345 mm) Weight : 36.8 lbs (16.7Kg), excluding consumables	
<b>Options</b>		Cutter Module Internal Rewinder with Label Dispenser Parallel port adapter module (Centronic female 36-pin) Applicator Interface (1 input, 3 outputs, power 500mA @ 5V) External label rewinder	

\* Specifications are subject to change without notice. All company and/or product names are trademarks and/or registered trademarks of their respective owners.

\*\* Minimum print height and maximum print speed specification compliance can be dependent on non-standard material variables such as label type, thickness, spacing, liner construction, etc. GoDEX is pleased to test non-standard materials for minimum print height, and maximum print speed capability.

# Applications

## Applications for Labels & Barcodes

**EZ6250i / EZ6350i** as versatile as for most applications.



### Logistics

shipping label, package tracing, package label, package receipt etc.

### Warehouse

shelf label, product label, stocking management, exterior/pallet labeling etc.

### Manufacturing

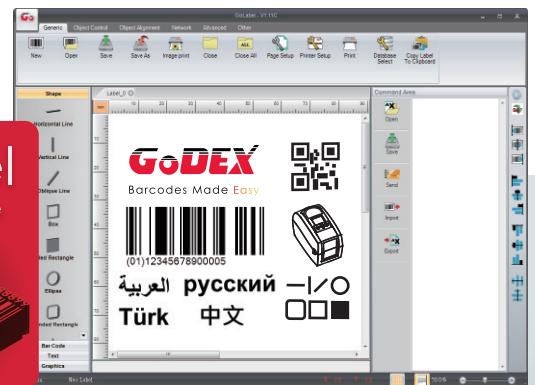
product label, manufacturing label, exterior/pallet label, trade, stocking and document management etc.

## GoDEX LABEL DESIGN SOFTWARE

GoLabel Software / User Friendly

GoLabel is based on a WYSIWYG (what you see is what you get) user interface, makes everything so easy for you to create and print barcode labels. GoLabel is the first-choice label design software that you can't miss it!

Go visit [www.godexintl.com](http://www.godexintl.com) and download GoLabel to experience it!



## GoDEX RIBBONS

High quality GoDEX thermal transfer ribbons.

GoDEX offers premium thermal transfer ribbons that will fit most of your printing applications.

- Wax
- Wax/ Resin
- Resin
- Near Edge

